



# City of Minneota

*an equal opportunity employer*

15 OCT 2024

TO: RESIDENTS OF

400-600 BLOCK OF E. LYON STREET  
100 BLOCK OF S. WILSON STREET & CIRCLE

FROM: CITY ADMINISTRATOR, ROBERT VIDOLOFF

SUBJECT: TREE REMOVALS TO PREPARE FOR SPRING 2025 LYON STREET PROJECT

WHO: RESIDENTS OF ABOVE LISTED LOCATIONS

WHAT: REMOVAL OF TREES AFFECTED BY SEWER / WATER / STORM SEWER UPGRADES

WHEN: 15 OCT 2024, REMOVAL STARTING 21 OCT 2024

WHY: TREE ROOTS IN VICINITY OF ROAD WILL BE DAMAGED AND REMOVAL IS NECESSARY

HOW: CITY HAS CONTRACTED FOR WATER/SEWER AND STORMWATER UPGRADES AND TREE REMOVAL IS REQUIRED WORK FOR THIS PROJECT

IMPACTS TO RESIDENTS:

SEE THE ATTACHED MAPS TO UNDERSTAND WHAT TREES ARE SCHEDULED TO BE REMOVED. TREES HAVE BEEN MARKED AND VERIFIED BY MINNEOTA SEWER DIRECTOR THAT THE CORRECT TREES HAVE BEEN MARKED

SOME TREES ARE ASH TREES SUSCEPTIBLE TO 'ASH BORE' INSECT AND WOULD MOST LIKELY BE REMOVED NEXT YEAR, SO PLEASE KEEP IN MIND WE ARE SAVING COSTS BY REMOVING THEM NOW

RECOMMENDATIONS TO RESIDENTS:

IF YOU HAVE CONCERNS PLEASE CONTACT ME

NEED MORE INFO?

- 1). CELL UPDATES: SIGN UP FOR CELL UPDATES BY TEXTING '56264' TO '888777'
- 2). CITY WEBSITE, LYON STREET PROJECT: <https://minneota.com/lyon.html>
- 3). STOP BY THE OFFICE OR CALL CITY OFFICE!
- 4). NEXT CONSTRUCTION MEETING IS 21 SEP 2024 AT 1 PM IN THE COMMUNITY CENTER

PRIMARY POINTS OF CONTACT:

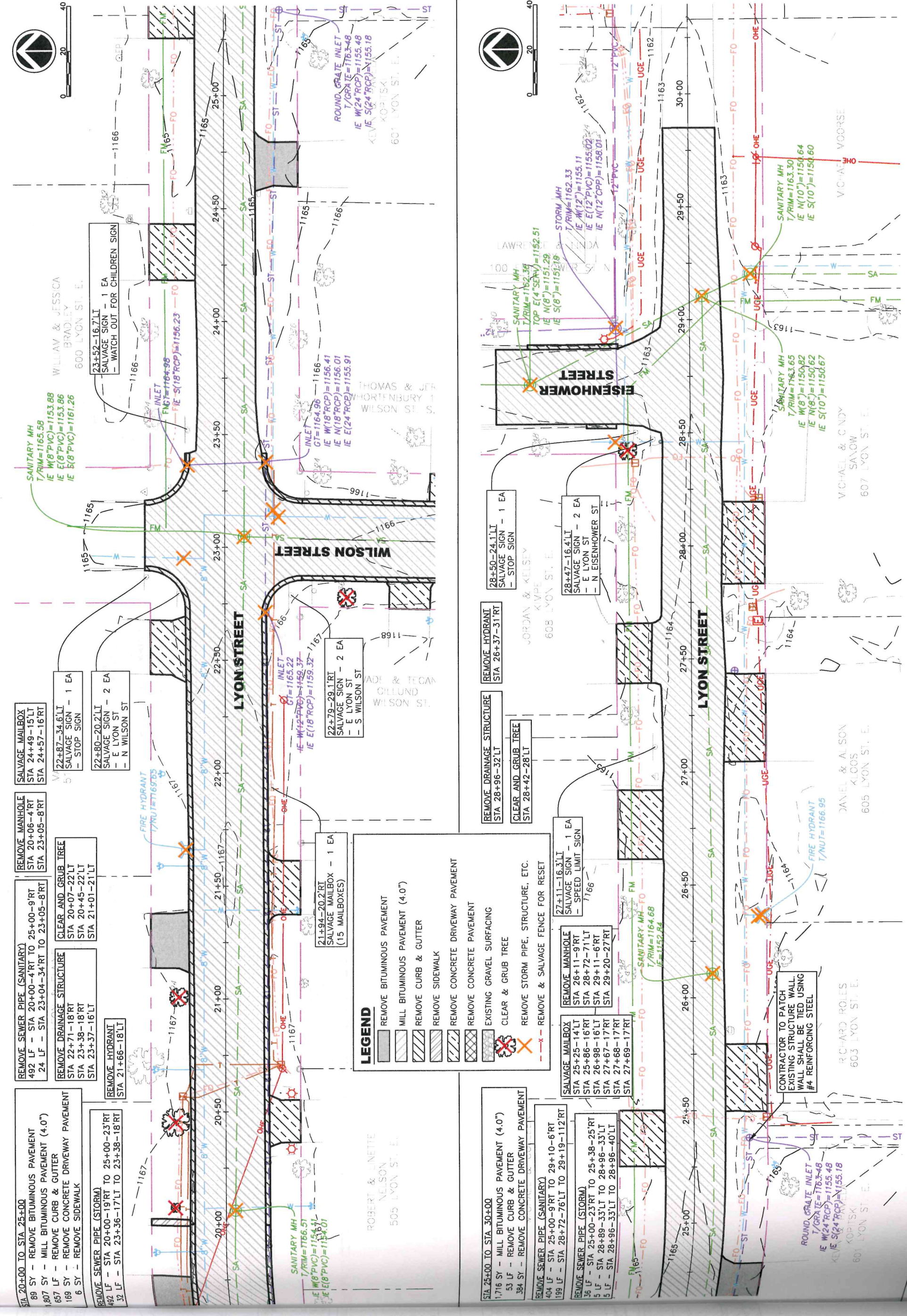
ROBERT VIDOLOFF, CITY ADMINISTRATOR, 507-872-6144, AFTER HOURS CELL: 702-217-4780  
TIM DEVLAEINCK, DIRECTOR SEWER DEPARTMENT, 507-872-5284



129 E First Street  
P.O. Box 307  
Minneota, MN 56264

PHONE (507) 872-6144  
FAX (507) 872-6143  
E-MAIL: [robert.vidoloff@ci.minneota.mn.us](mailto:robert.vidoloff@ci.minneota.mn.us)  
WEB SITE: <http://www.minneota.com>

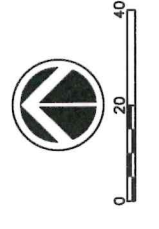
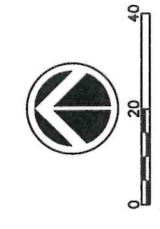




- 20+00 TO STA 25+00  
 89 SY - REMOVE BITUMINOUS PAVEMENT  
 1807 SY - MILL BITUMINOUS PAVEMENT (4.0")  
 657 LF - REMOVE CURB & GUTTER  
 169 SY - REMOVE CONCRETE DRIVEWAY PAVEMENT  
 6 SY - REMOVE SIDEWALK
- REMOVE SEWER PIPE (STORM)  
 492 LF - STA 20+00-19'RT TO 25+00-23'RT  
 32 LF - STA 23+36-17'LT TO 23+38-18'RT
- REMOVE SEWER PIPE (SANITARY)  
 492 LF - STA 20+00-4'RT TO 25+00-9'RT  
 24 LF - STA 23+04-34'RT TO 23+05-8'RT
- REMOVE DRAINAGE STRUCTURE  
 STA 22+71-18'RT  
 STA 23+38-18'RT  
 STA 23+37-16'LT
- CLEAR AND GRUB TREE  
 STA 20+07-22'LT  
 STA 20+45-22'LT  
 STA 21+01-21'LT
- REMOVE MANHOLE  
 STA 20+06-4'RT  
 STA 23+05-8'RT
- SALVAGE MAILBOX  
 STA 24+49-15'LT  
 STA 24+57-16'RT
- 22+87-34.6'LT  
 SALVAGE SIGN - 1 EA  
 - STOP SIGN
- 22+80-20.2'LT  
 SALVAGE SIGN - 2 EA  
 - E LYON ST  
 - N WILSON ST
- 22+79-29.1'RT  
 SALVAGE SIGN - 2 EA  
 - E LYON ST  
 - S WILSON ST
- 21+94-20.2'RT  
 SALVAGE MAILBOX - 1 EA  
 (15 MAILBOXES)
- 22+52-16.7'LT  
 SALVAGE SIGN - 1 EA  
 - WATCH OUT FOR CHILDREN SIGN

**LEGEND**

- REMOVE BITUMINOUS PAVEMENT
- MILL BITUMINOUS PAVEMENT (4.0")
- REMOVE CURB & GUTTER
- REMOVE SIDEWALK
- REMOVE CONCRETE DRIVEWAY PAVEMENT
- REMOVE CONCRETE PAVEMENT
- EXISTING GRAVEL SURFACING
- CLEAR & GRUB TREE
- REMOVE STORM PIPE, STRUCTURE, ETC.
- REMOVE HYDRANT
- REMOVE DRAINAGE STRUCTURE
- CLEAR AND GRUB TREE
- REMOVE MANHOLE
- SALVAGE MAILBOX
- REMOVE SEWER PIPE (SANITARY)
- REMOVE SEWER PIPE (STORM)
- CONTRACTOR TO PATCH EXISTING STRUCTURE WALL. WALL SHALL BE TIED USING #4 REINFORCING STEEL



WILLIAM & JESSICA  
 BRADLEY  
 600 LYON ST. E.

THOMAS & JEFF  
 HORTENBURY  
 WILSON ST. S.

DADE & TECAN  
 CILLUND  
 WILSON ST.

ROBERT & JINETTE  
 NELSON  
 505 LYON ST. E.

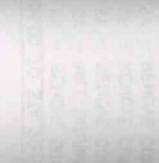
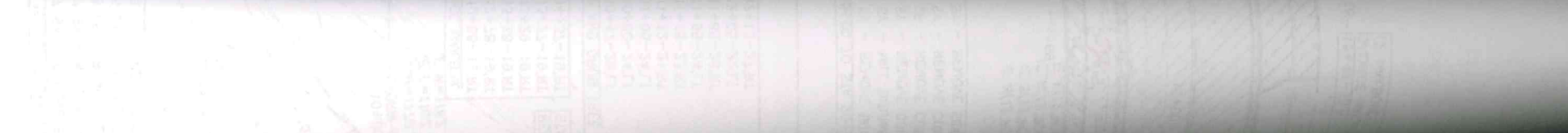
- 25+00 TO STA 30+00  
 1716 SY - MILL BITUMINOUS PAVEMENT (4.0")  
 53 LF - REMOVE CURB & GUTTER  
 384 SY - REMOVE CONCRETE DRIVEWAY PAVEMENT
- REMOVE SEWER PIPE (SANITARY)  
 404 LF - STA 25+00-9'RT TO 29+10-6'RT  
 199 LF - STA 28+72-76'LT TO 29+19-112'RT
- REMOVE SEWER PIPE (STORM)  
 36 LF - STA 25+00-23'RT TO 25+38-25'RT  
 5 LF - STA 28+89-33'LT TO 28+96-33'LT  
 5 LF - STA 28+96-33'LT TO 28+96-40'LT
- SALVAGE MAILBOX  
 STA 25+25-14'LT  
 STA 25+86-16'RT  
 STA 26+98-16'LT  
 STA 27+67-17'RT  
 STA 27+68-17'RT  
 STA 27+69-17'RT
- REMOVE MANHOLE  
 STA 26+11-9'RT  
 STA 28+72-71'LT  
 STA 29+11-6'RT  
 STA 29+20-27'RT
- 27+11-16.3'LT  
 SALVAGE SIGN - 1 EA  
 - SPEED LIMIT SIGN  
 1166
- 28+47-16.4'LT  
 SALVAGE SIGN - 2 EA  
 - E LYON ST  
 - N EISENHOWER ST
- 28+50-24.1'LT  
 SALVAGE SIGN - 1 EA  
 - STOP SIGN
- REMOVE HYDRANT  
 STA 26+37-31'RT
- REMOVE DRAINAGE STRUCTURE  
 STA 28+96-32'LT
- CLEAR AND GRUB TREE  
 STA 28+42-28'LT
- 28+52-16.7'LT  
 SALVAGE SIGN - 1 EA  
 - WATCH OUT FOR CHILDREN SIGN

JORDAN & KELSEY  
 KIMPE  
 608 LYON ST. E.

DANIEL & A. SON  
 KLOOS  
 603 LYON ST. E.

MICHAEL & CANDY  
 SAILOW  
 607 LYON ST. E.

VICAR & VOORSE



ROBERT & JINETTE  
 NELSON  
 505 LYON ST. E.

ROBERT & JINETTE  
 NELSON  
 505 LYON ST. E.

DADE & TECAN  
 CILLUND  
 WILSON ST.

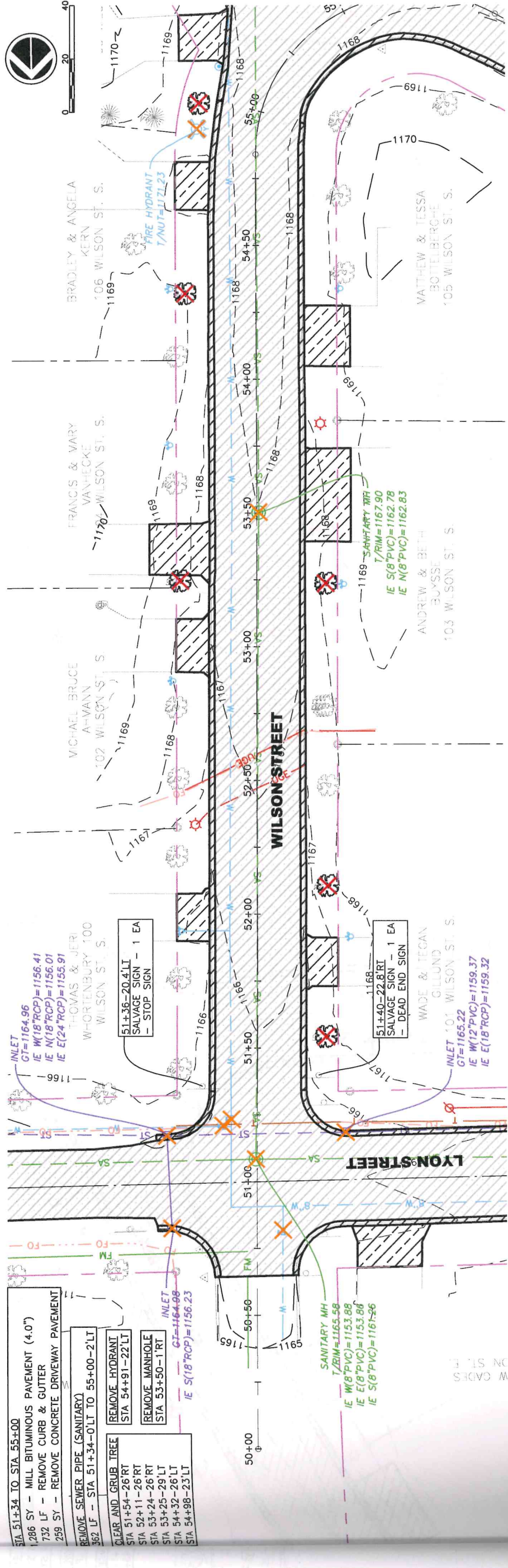
DADE & TECAN  
 CILLUND  
 WILSON ST.

THOMAS & JEFF  
 HORTENBURY  
 WILSON ST. S.

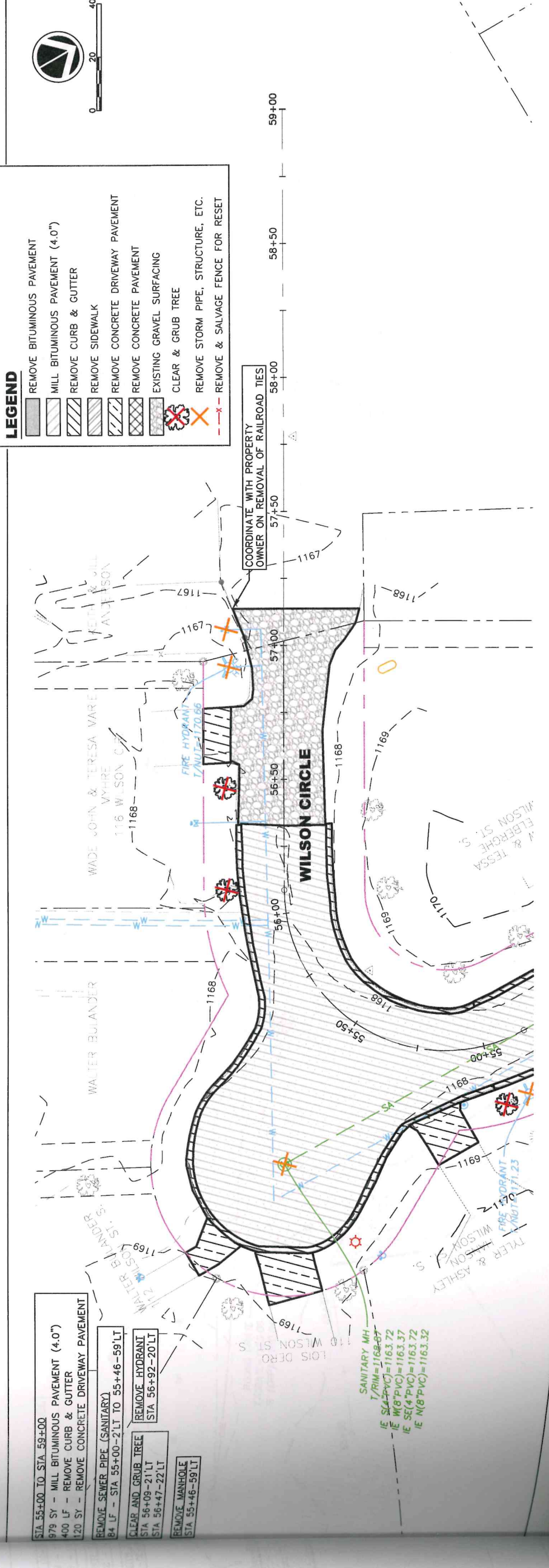
LAWRENCE & LINDA  
 100

MICHAEL & CANDY  
 SAILOW  
 607 LYON ST. E.

VICAR & VOORSE



- STA 51+34 TO STA 55+00  
 1,286 SY - MILL BITUMINOUS PAVEMENT (4.0")  
 732 LF - REMOVE CURB & GUTTER  
 299 SY - REMOVE CONCRETE DRIVEWAY PAVEMENT
- REMOVE SEWER PIPE (SANITARY)  
 362 LF - STA 51+34-0"LT TO 55+00-2"LT
- CLEAR AND GRUB TREE  
 STA 51+54-26'RT  
 STA 52+11-26'RT  
 STA 53+24-26'RT  
 STA 53+25-29'LT  
 STA 54+32-26'LT  
 STA 54+98-23'LT
- REMOVE HYDRANT  
 STA 54+91-22'LT
- REMOVE MANHOLE  
 STA 53+50-1'RT  
 STA 54+98-23'LT
- INLET  
 GT=1164.96  
 IE W(18"RCP)=1156.41  
 IE N(18"RCP)=1156.01  
 IE E(24"RCP)=1155.91
- 51+36-20.4'LT  
 SALVAGE SIGN - 1 EA  
 STOP SIGN
- THOMAS & JERI  
 W-ORTENSBURY 100  
 WILSON ST. S.
- FRANCIS & VARY  
 VANHECKE  
 WILSON ST. S.
- BRADLEY & ANGELA  
 KERN  
 WILSON ST. S.
- WILSON STREET
- 50+00 51+00 52+00 53+00 54+00 55+00



- STA 55+00 TO STA 59+00  
 979 SY - MILL BITUMINOUS PAVEMENT (4.0")  
 400 LF - REMOVE CURB & GUTTER  
 120 SY - REMOVE CONCRETE DRIVEWAY PAVEMENT
- REMOVE SEWER PIPE (SANITARY)  
 84 LF - STA 55+00-2"LT TO 55+46-59'LT
- CLEAR AND GRUB TREE  
 STA 56+09-21'LT  
 STA 56+47-22'LT
- REMOVE HYDRANT  
 STA 56+92-20'LT
- REMOVE MANHOLE  
 STA 55+46-59'LT
- LOS DERO S
- WALTER BUJANJER
- WADE JOHN & TERESA VAIRE  
 VAIRE  
 WILSON ST. S.
- WILSON STREET
- 55+00 56+00 57+00 58+00 59+00

- LEGEND**
- REMOVE BITUMINOUS PAVEMENT
  - MILL BITUMINOUS PAVEMENT (4.0")
  - REMOVE CURB & GUTTER
  - REMOVE SIDEWALK
  - REMOVE CONCRETE DRIVEWAY PAVEMENT
  - REMOVE CONCRETE PAVEMENT
  - EXISTING GRAVEL SURFACING
  - CLEAR & GRUB TREE
  - REMOVE STORM PIPE, STRUCTURE, ETC.
  - REMOVE & SALVAGE FENCE FOR RESET



COORDINATE WITH PROPERTY  
 OWNER ON REMOVAL OF RAILROAD TIES